

THE DAILY NEWS

www.paloaltodailynews.com
www.mercurynews.com/peninsula
www.twitter.com/baydailynews

Published five days a week by
Bay Area News Group

255 Constitution Drive
Menlo Park, CA 94025



DAVID ROUNDS, Publisher
P: 650-391-1015
F: 650-391-1011
drounds@bayareanews.com

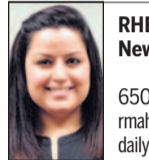
NEWSROOM

Phone: 650-391-1000
Fax: 650-391-1346

MARIO DIANDA, Editor
650-391-1342
mdianda@dailynewsgroup.com



JASON GREEN, News Reporter
650-391-1337
jgreen@dailynewsgroup.com



RHEA MAHBUBANI, News Reporter
650-391-1334
rmahbubani@dailynewsgroup.com



GREG FRAZIER, Sports Editor
650-391-1330
sports@dailynewsgroup.com



VYTAS MAZEIKA, Sports Writer
650-391-1329
vmazeika@dailynewsgroup.com



JOHN REID, Sports Writer
650-391-1327
jreid@dailynewsgroup.com



JOHN ORR, A&E Editor
650-391-1042
jorr@dailynewsgroup.com

BUSINESS

ADVERTISING
P: 650-391-1015
F: 650-863-0904

CLASSIFIED
650-327-7247
Or call: 408-920-5084
F: 650-863-0904

Yvette Spencer, Classifieds Manager
408-200-1030

Richard Raker, Circulation Manager
650-391-1338

SALES



JENNIFER BELTON
650-391-1044
San Carlos, Belmont, San Mateo, Burlingame
jbelton@dailynewsgroup.com



HELEN HAMMOND
650-391-1034
Stanford, Palo Alto and Menlo Park
hhammond@dailynewsgroup.com



KEVIN JANDU
650-391-1024
Mountain View, Los Altos, Real Estate
kjandu@dailynewsgroup.com



MATT PODOLL
650-391-1023
Mountain View, Palo Alto, Automotive
mpodoll@dailynewsgroup.com



SARA YATES
650-391-1347
Redwood City, Menlo Park
syates@dailynewsgroup.com

LOTTERY

PowerBall: 22, 31, 38, 47, 48 M: 15

Jackpot: \$90M

Mega: 14, 18, 58, 59, 68 M: 4

Jackpot: \$142M

Super Lotto: 6, 7, 14, 21, 26 M: 22

Jackpot: \$24M

Fantasy 5: 16, 21, 25, 33, 36

Daily 4: 4, 0, 0, 9

Daily 3 (midday): 5, 5, 4
(evening): 7, 4, 2

DAILY DERBY

1st: 6, Whirl Win

2nd: 7, Eureka

3rd: 9, Winning Spirit

Race time: 1:46.74

PALO ALTO



Courtesy of the City of Palo Alto

An artist rendering of the Adobe Bridge design submitted by HNTB Engineering, 64North, Bionic Landscape Architecture and Ned Kahn.

Winner of design competition for new Highway 101 bridge named

■ Bicycle, pedestrian overcrossing to connect South Palo Alto to Baylands Nature Preserve

BY JASON GREEN
Daily News Staff Writer

A victor has been declared in the competition to design a landmark bicycle and pedestrian overcrossing in Palo Alto.

The new bridge, which is expected to cost at least \$10 million, would span Highway 101 at Adobe Creek, connecting south Palo Alto with the environmentally sensitive Baylands Nature Preserve. It would replace a bicycle and pedestrian underpass that floods during the rainy season.

The California firms of HNTB Engineering, 64North, Bionic Landscape Architecture and Ned Kahn comprise the

ON THE WEB

To view the winning design, visit <http://tinyurl.com/ado-becreekbridge>

winning team.

Dubbed "Confluence," the span designed by the team features a northward-leaning arch crisscrossed by cables, as well as a place for people to sit and take in the view. Storm water from the bridge and West Bayshore Road would be treated and channeled into a new vernal pool.

"Drawn from the trajectories of the cyclists moving along it and the sinuous waterways of the Bay, it is designed not as an

icon but as an experience," the team wrote in a description of the bridge.

"Here at the confluence of Adobe and Barron creeks, we can create an opportunity for experience, for beauty and a deeper understanding of our natural world."

The competition kicked off in late September and more than 20 firms around the world submitted qualifications, along with their design intent and approach, to the city for consideration.

A jury comprised of architects reviewed the submissions based on the four principles of originality, versatility, conservation and interconnectedness. Three teams were then selected to de-

velop a conceptual design for the bridge with a \$20,000 stipend from the city's capital improvement program.

The three teams presented their designs to the jury and public on Wednesday, with the jury naming a winner.

The winning design will be shown in January to the Architectural Review Board, Parks and Recreation Commission, Planning and Transportation Commission, and the Public Art Commission. The City Council is expected to review and possibly approve the design in February.

Email Jason Green at jgreen@dailynewsgroup.com; follow him at twitter.com/jgreendailynews.

PALO ALTO

Chanukah celebrated at Moldaw

Daily News

At Moldaw Residences retirement community, to commemorate Chanukah this year, a different resident was designated to light the candles every evening and share his or her personal memories surrounding the holiday, according to a press release from Moldaw.

Moldaw resident Rabbi David Teitelbaum discussed the overall importance of the holiday and the significance of the family menorahs.

"One of my personal

and favorite menorahs is displayed in my home at Moldaw all year long," said Henry Burger. "I got it on a trip to Israel in a jewelry store in Jerusalem during the 1970s."

"The lighting of the menorahs is part of the central focus and symbolism of Chanukah; the holiday itself commemorates the miracle of light. It also reminds us all that miracles continue to happen each and every day," said Thia Tran, Lifestyle Coordinator at Moldaw Residences. "It was a beautiful scene watching the seniors



Courtesy photo

Henry Burger said he bought this menorah in Israel.

beaming as they spent time together reflecting on experiences and enjoying the

Person hit, killed by Caltrain Friday

BY SARA GAISER
Bay City News

Regular Caltrain service resumed but trains were still experiencing major delays Friday night after a northbound train struck and killed a person on the tracks between Mountain View and Sunnyvale, according to Caltrain officials.

The collision involving Train 381, an express "Baby Bullet" train carrying 59 passengers, was reported around 6 p.m., Caltrain officials said. The train left San Jose at 5:45 p.m. and was due to arrive in San Francisco at 6:47 p.m. The northbound track was reopened for trains at slow speeds around 7:50 p.m. and trains began departing on schedule at 8:40 p.m. The southbound track was reopened around 9 p.m.

Simply Beautiful Eyewear



Wilby Optical Inc.

"Fashion Meets Technology"

Town & Country Village
855 El Camino Real, Suite 103
Palo Alto • 650.326.9111
www.wilbyoptical.com

TREAT YOURSELF, TREAT A FRIEND



Fall Wellness Promotion!

Refer a friend or family member to an Avenidas Wellness Service and receive **50% off the same service** for yourself! Referred appointments must be booked for November or December. Discounted services available after your referral's appointment. Participating providers are:

- Foot and Hand Nail Care
- Massage & Reflexology
- Podiatry
- Reiki

Call (650) 289-5400
for details and appointments!

avenidas
TOOLS FOR POSITIVE AGING

450 Bryant St Palo Alto, CA 94301
www.avenidas.org • (650) 289-5400

SAVE 50%